

Eastern New Mexico University

Participation in the student exchange program

Current Status with CONAHEC		Deadline for Applications
Hosting International Students	Yes 25	Fall: 1-Apr Spring: 1-Oct
Sending Students Abroad	Yes 8 students or up to the number of international students hosted.	Varies at each host institution



Who can participate?

Academic programs available for exchange students:

Agriculture, Anthropology, Biochemistry, Biology, Business Administration (Several Fields), Chemistry, Communication, Computer Science, Criminal Justice, Education, Electronics Engineering Technology, English, Fine Arts (Several Fields), Health and Physical Education, History, Kinesiology, Mathematics, Psychology, Religion, Sociology, Spanish. **Restrictions:** None

Students' requirements: Admitted to program at home institutions. TOEFL IBT 61, IELTS 6.0, Duolingo 85, or CEFR B2 level

Information for international students

- **Academics**

Main language of Instruction: English

Are there any regular classes available in a different language? No.

Full-time academic load per term: 12-18 Credits per semester

- **Living**

Approximate living costs per semester: \$6,000 includes: Housing (shared) \$1,948, Meals \$2,137, books, insurance, personal insurance, and fees \$1,450

Additional fees: Student ID card: \$25.00. For more information regarding fees please check <https://www.enmu.edu/admission/tuition-and-fees>



Institutional Information



Institution Name: Eastern New Mexico University

Country: United States

Location: ENMU is located in the city of Portales, NM. Portales is located near the eastern border of New Mexico about 220 miles from Albuquerque, 220 miles from Santa Fe, and about 110 miles from Amarillo and Lubbock, Texas. Portales is a city of 12,000 and the county seat of Roosevelt county. The valley in which Portales is located is remnant of an ice age drainage system and is a highly productive agricultural area producing several crops, including Portales' best known product, the Valencia peanut. Dairy and cattle production add to the agriculture-based economy.

Website: <http://www.enmu.edu/>

Description: Eastern New Mexico University, a state institution offering bachelor's and master's degrees, serves students from New Mexico and around the world. Educational Programs are offered at the Portales campus and also by interactive distance education, public broadcast television, a university center in Ruidoso, New Mexico, and branch/community college in Roswell, New Mexico.

For more information about Eastern New Mexico University please see the university's webpage: <http://www.enmu.edu/>

Lyon College

Participation in the student exchange program

Current Status with CONAHEC		Deadline for Applications
Hosting International Students	Yes 10	Fall: 15-May Spring: 1-Oct
Sending Students Abroad	Yes 8 students or up to the number of international students hosted.	Varies at each host institution



Who can participate?

Academic programs available for exchange students:

Fine Arts (Several Fields), Biology, Business Administration, Chemistry, Computer Science, English, History, Mathematics, Music, Political Science, Psychology, Religion, Exercises Science, Data Science, Economics. **Restrictions:** None

Students' requirements: Required test scores: TOEFL-79 or IELTS-6.5. For information on eligibility click here: <https://www.lyon.edu/international-applicants>

Information for international students

- **Academics**

Main language of Instruction: English

Are there any regular classes available in a different language? No.

Full-time academic load per term: Contact institution for more information

- **Living**

Approximate living costs per semester: Housing and Meals: \$5,365. Local transportation: \$250. Others: health insurance \$700. Enrollment deposit \$250.

Additional fees: Average cost of books: 750 / Application fee: 50.00 / Technology & Student Activity Fees: \$482 (per semester). For more information, please check the specific website for international students: <https://www.lyon.edu/international-students>



Institutional Information



Institution Name: Lyon College

Country: United States

Location: 2300 Highland Road

Batesville, Arkansas 72503

Website: <http://www.lyon.edu/>

Description: Lyon College is an independent, residential, co-educational, undergraduate liberal arts college located in Batesville, Arkansas. It is affiliated with the Presbyterian Church (U.S.A.). Founded in 1872, it is the oldest independent college in Arkansas.

For more information on Lyon College please see the university's webpage:

<https://www.lyon.edu/about-lyon>

Methodist University

Participation in the student exchange program

Current Status with CONAHEC		Deadline for Applications
Hosting International Students	Yes 6	Fall: 1-Apr Spring: 30-Oct
Sending Students Abroad	Yes 8 students or up to the number of international students hosted.	Varies at each host institution



Who can participate?

Academic programs available for exchange students:

Fine Arts (Several Fields), Biology, Business Administration, Chemistry (Several Areas), Communication, Computer Science, English, History, Mathematics, Modern Languages, Philosophy, Political Science, Psychology, Sociology. **Restrictions:** None

Students' requirements: 3.0 GPA or equivalent AND completion of 60 credit hours prior to exchange

Information for international students

- **Academics**

Main language of Instruction: English

Are there any regular classes available in a different language? No.

Full-time academic load per term: Contact institution for more information

- **Living**

Approximate monthly living costs: Housing: \$2886. Meals: \$3054. Others: Student Health Insurance \$1308. books and other fees \$900.

Additional fees: Student Health Insurance: \$1,308 per semester; Books range from \$450-\$800 per semester; Other fees \$165. For more information regarding fees, please see: <http://www.methodist.edu/tuition-fees>



Institutional Information



Institution Name: Methodist University

Country: United States

Location: 5400 Ramsey Street

Fayetteville, NC 28311

Website: <http://www.methodist.edu>

Description: Methodist University, known until 2006 as Methodist College, is a private university that is historically related to the North Carolina Annual Conference of the United Methodist Church and is located in Fayetteville, North Carolina. It is regionally accredited by the Southern Association of Colleges and Schools Commission on Colleges (SACSCOC). Methodist University offers over 80 majors and concentrations in five undergraduate schools and four graduate programs. A fifth graduate program (and first doctoral-level program), the Doctor of Physical Therapy Program, began enrolling students in Fall 2015.

For more information on Methodist University please see the university's webpage: <http://www.methodist.edu>

The University of Texas at El Paso

Participation in the student exchange program

Current Status with CONAHEC		Deadline for Applications
Hosting International Students	Yes 10	Fall: 15-Apr Spring: 15-Oct
Sending Students Abroad	Yes 8 students or up to the number of international students hosted.	Varies at each host institution



Who can participate?

Academic programs available for exchange students:

Business Administration (Several Fields), Education (Several Fields), Liberal Arts (Several Fields), Health Sciences (Several Fields), Sciences (Several Fields). For more information: <http://catalog.utep.edu/undergrad/degree-programs/> **Restrictions:** Engineering. **Students' requirements to apply:** Students must have completed at least one semester of university study. The application (online) includes: the exchange student application, English proficiency test scores, official transcripts from students' home university (in English), declaration of finances/CFR, and a copy of their passport (in color). View the English proficiency requirements at: <https://www.utep.edu/student-affairs/testing/tests/required-scores.html>

Information for international students

• Academics

Main language of Instruction: English. **Are there any regular classes available in a different language?** Yes, few courses in Spanish available and language courses.

Full-time academic load per term: 12 credits per semester

• Living

Approximate monthly living costs: \$7,400 (health insurance, housing, food, books, fees & personal expenses). Housing options vary by floor plan. For available floor plan and rates visit: <https://www.utep.edu/student-affairs/housing/future-residents/residence-floor-plans-2019-2020.html>. View available meal plan options at <https://utepdining.sodexomyway.com./my-meal-plan/index>. Student health insurance is mandatory, for rates and more information visit: <https://www.utep.edu/human-resources/services/benefits/student-health-insurance-plan.html>

Institutional Information



Institution Name: The University of Texas at El Paso

Country: United States

Location: Located on the El Paso-Juárez border, UTEP (pronounced "you-tehp") is one of the largest Hispanic-majority universities in the United States. As a principal institution of higher learning in far west Texas, the university serves as a vital force in the economic, academic, and cultural advancement of this binational region.

Website: <http://www.utep.edu>

Description: The University of Texas at El Paso was established in 1914 on a foundation of academic excellence, offering over 160 degree programs. UTEP is a top-ranked designated R1 research university for its success in achieving competitive research and student social mobility.

For more information about The University of Texas at El Paso please see the university's webpage: <https://www.utep.edu/>



University of the Incarnate Word

Participation in the student exchange program

Current Status with CONAHEC		Deadline for Applications
Hosting International Students	Yes 3	Fall: 1-Apr Spring: 15-Sep
Sending Students Abroad	Yes 8 students or up to the number of international students hosted.	Varies at each host institution

Who can participate?

Academic programs available for exchange students:

Restrictions: Academic Disciplines not available: **Students' requirements:** Must have at least 2.5 grade-point average on a 4.0 scale or equivalent. Must meet English Proficiency (Minimum TOEFL Score: Internet-Based=61, Computer-Based=173, or Paper-Based=500; or Minimum IELTS Score=6.0).

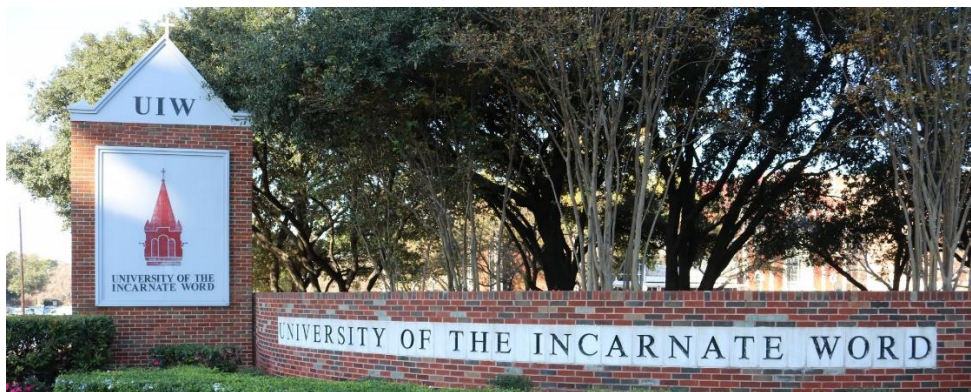
Information for international students

- **Academics:**

Main language of Instruction: English

- **Living**

Approximate monthly living costs: Website for Housing/meals: **Additional fees:** For more information:



Institutional Information



Institution Name: University of the Incarnate Word

Country: United States

Location: San Antonio, Texas

Website: <http://www.uiw.edu/>

Description:

West Virginia University

Participation in the student exchange program

Current Status with CONAHEC		Deadline for Applications
Hosting International Students	Yes 12	Fall: 1-Apr Spring: 15-Sep
Sending Students Abroad	Yes 8 students or up to the number of international students hosted.	Varies at each host institution

Who can participate?

Academic programs available for exchange students:

Accounting, Acting, Advertising, Aerospace Engineering, Agribusiness, Agronomy, Animal and Nutritional Science, Applied and Environmental Microbiology, Art, Biochemistry, Biology, Biomedical Engineering, Biometric Systems, Business, Chemical Engineering, Chemistry, Child Development and Family Studies, Civil Engineering, Communication Studies, Computer Science, Criminology, Economics, Electrical Engineering, Education, English, Environmental and Energy Resources Management, Economics, Fashion, Finance, Forensic and Investigative Science, Forest Resources, Geography, Geology, Global Supply Chain Management, Graphic Design, History, Hospitality and Tourism, Human Nutrition and Foods, Immunology, Industrial Engineering, Interior Design, Intermedia and Photography, International Studies, Journalism, Landscape Architecture, Latin American Studies, Management, Information Systems, Marketing, Mathematics, Mechanical Engineering, Mining Engineering, Music, Theatre, Nursing, Petroleum and Natural Gas Engineering, Philosophy, Photography, Physics, Political Science, Public Health, Public Relations, Social Studies, Soil Sciences, Sport Management, Wildlife and Fisheries Resources, Women's and Gender Studies.

Restrictions: Academic Disciplines not available: Medicine, Dentistry, Petroleum Engineering, Athletic Training, Law and Nursing. **Students' requirements:** Must have at least 2.5 grade-point average on a 4.0 scale or equivalent. Must meet English Proficiency (Minimum TOEFL Score: TOEFL Paper Based: 550, TOEFL Internet Based: 79, IELTS: 6.5, Duolingo English Test: 105).

Information for international students

- **Academics:**

Main language of Instruction: English

- **Living**

Approximate monthly living costs: Website for Housing/meals:

http://housing.wvu.edu/apply_for_housing/room_and_meal_rates. **Additional fees:** \$150 study abroad fee (includes transportation from airport / / Mandatory insurance (\$1,000 per semester). For more information: <https://educationabroad.wvu.edu/incoming>



Institutional Information



Institution Name: West Virginia University

Country: United States

Location: Morgantown, West Virginia

Website: <http://www.wvu.edu>

Description: West Virginia University (WVU) is a public land grant research university in Morgantown, West Virginia, United States. Its other campuses include the West Virginia University Institute of Technology in Montgomery and Potomac State College of West Virginia University in Keyser; and a second clinical campus for the University's medical and dental schools at Charleston Area Medical Center in Charleston. WVU Extension Service provides outreach with offices in all of West Virginia's 55 counties. Since 2001, WVU has been governed by the West Virginia University Board of Governors.

For more information about West Virginia University please see the university's webpage:

<http://www.wvu.edu>

educationabroad@mail.wvu.edu

Western New Mexico University

Participation in the student exchange program

Current Status with CONAHEC		Deadline for Applications
Hosting International Students	Yes 1	Fall: 15-Mar Spring: 30-Oct
Sending Students Abroad	Yes 8 students or up to the number of international students hosted.	Varies at each host institution



Who can participate?

Academic programs available for exchange students:

Business Management (Several Areas). *Restrictions:* None

Students' requirements: <http://admissions.wnmu.edu>

Information for international students

- **Academics**

Main language of Instruction: English

Are there any regular classes available in a different language? No.

- **Living**

Approximate monthly living costs: N/A

Additional fees: Health Insurance

For more information, please check the specific website for international students:

<http://admissions.wnmu.edu/international/>

Institutional Information



Institution Name: Western New Mexico University

Country: United States

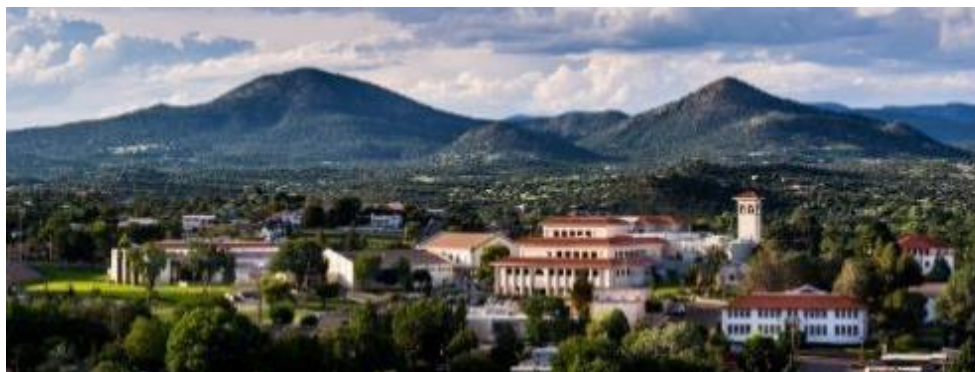
Location: Silver City, New Mexico

Website: <http://wnmu.edu>

Description: Western New Mexico University is a public university located in Silver City, in the U.S. state of New Mexico. It has served the people of the state and its surrounding areas as a comprehensive, regional, rural, public coeducational university since 1893 and caters to a student body diverse in age, culture, language and ethnic background.

For more information about West Virginia University please see the university's webpage:

<http://wnmu.edu/about/>



Selkirk College

Participation in the student exchange program

Current Status with CONAHEC		Deadline for Applications
Hosting International Students	Yes 3-4	Fall: 1-May Winter: 1-Oct
Sending Students Abroad	Yes 8 students or up to the number of international students hosted.	Varies at each host institution

Who can participate?

Academic programs available for exchange students:

Business Administration, Resort and Hotel Management, Digital Arts and New Media, and many others. Restrictions. *Restrictions:* None

Students' requirements: Must be a student in good standing at a CONAHEC-member institution. Click here for more information on admissions requirements.

<https://selkirk.ca/international/how-apply-selkirk-college> Language requirement: Submission of an IBT TOEFL score of 80 or better; Submission of an IELTS score of 6.0 with no individual band less than 5.5 or better.

Information for international students

- **Academics**

Main language of Instruction: English **Are there any regular classes available in a different language?** No.

Full-time academic load per term: 15-21 credits or 4-5 courses. Please review the start dates for each term: <http://selkirk.ca/programs-courses/explore-programs/start-in-winter>

- **Living**

Approximate monthly living costs: \$800-\$1000

For more information, please check the specific website for international students: <http://selkirk.ca/international>



Institutional Information



Institution Name: Selkirk College

Country: Canada

Location: The main campuses are located in Castlegar and Nelson, British Columbia. Selkirk has eight campuses in total. Click here for more information:

<http://selkirk.ca/about-us/coming-to-campus/campus-locations>

Website: <http://www.selkirk.ca>

Description: Selkirk College was established in 1966 as a fully accredited public post-secondary institution that offers access to a wide variety of university courses and career directed 2-year programs.

For more information about Selkirk College please see the university's webpage: <http://www.selkirk.ca>

University of Regina

Participation in the student exchange program

Current Status with CONAHEC		Deadline for Applications
Hosting International Students	Yes 5	Fall: 1-April Spring: 1-Oct
Sending Students Abroad	Yes 8 students or up to the number of international students hosted.	Varies at each host institution

Who can participate?

Academic programs available for exchange students:

Over 70 programs: Arts, Business Administration, Education, Engineering & Applied Science, Media, Arts & Performance, Kinesiology & Health Studies, Science, Social Work. Please review the programs at: <https://urconnected.uregina.ca/program.do> **Restrictions:** Students will not be accepted into Nursing, Psychology, Journalism and Pre-professional program. The Faculty of Engineering has limited capacity and we can accept a maximum of 2 students into the programs. **Students' requirements:** Must be in good academic standing (at least a 70% or 2.7 GPA) at the Conahec - member institution. Lectures are all taught in English. It is highly recommended that one of these ELP tests are met: TOEFL: Internet based (83); Reading (20); Listening (20); Speaking (20); Writing (20). IELTS: Overall Band score of 6.5, with no band less than 6.0. Students will receive further email communication from U of R Study Abroad & Global Mobility to initiate the application process once the nomination is received in the CONAHEC portal.

Information for international students

• Academics

Main language of Instruction: English. **Are there any regular classes available in a different language?** No.

Full-time academic load per term: 9-15 credits or 3-5 courses.

• Living

Approximate living costs per semester: \$3,200-8,300 CAD approx. if living on campus (Residence: \$2,200-\$4,600, Meal Plan: \$1,000-3,700)

For more information, please check the specific website for international students:

<https://www.uregina.ca/international/>



Institutional Information



Institution Name: University of Regina

Country: Canada

Location: The main campus is located in the city of Regina in the province of Saskatchewan.

Website: <http://www.uregina.ca>

Description: The University of Regina has roots in Regina College, a small residential high school established by the Methodist church in 1911. The College grew in size and significance becoming a campus of the University of Saskatchewan and, ultimately, an independent degree granting university – the University of Regina – in 1974. Currently, it is one of Canada's top 10 comprehensive universities.

Support is our strength: From the moment we meet you and your family, until the moment you find employment after graduation, we provide personalized services to encourage and assist in your academic and career needs.

State of the art facilities: Come and discover our new campus. It is modern, clean and convenient.

The U of R is a global community: We are large enough to host students from over 90 countries, yet small enough to give you a more personalized and focused academic experience. You can get to know your professors and faculty members. The student to faculty ratio is 20:1. We also have many associations that you can get involved with. Check it out!

University of the Fraser Valley

Participation in the student exchange program

Current Status with CONAHEC		Deadline for Applications
Hosting International Students	Yes 3	Fall: 1-April Spring: 1-Oct
Sending Students Abroad	Yes 8 students or up to the number of international students hosted.	Varies at each host institution

Who can participate?

Academic programs available for exchange students:

Exchange students may take any courses in any program for which they meet the prerequisites, except Nursing and Trades A full list of program is available here:

<https://www.ufv.ca/admissions/programs-accepting-applications>

Restrictions: Students' requirements: IELTS (Academic) - score of 6.5 or higher with a minimum band score of 6.0. TOEFL (includes Home Edition) - score of 88 or higher (iBT) with no section below 20, Duolingo English Test (DET) score of 110 or higher.

Information for international students

- [Academics](#)

Main language of Instruction: English.

Full-time academic load per term: 9-15 credits or 3-5 courses (18-30 ECTS).

- [Living](#)

Approximate living costs per semester: \$3,400 CAD if living on campus

For more information, please check the specific website for international students:

<http://international.ufv.ca>



Institutional Information



Institution Name: University of the Fraser Valley

Country: Canada

Location: Abbotsford, British Columbia (70km east of Vancouver)

Website: <http://international.ufv.ca>

Description:

The University of the Fraser Valley (UFV) is a fully accredited, public university that enrolls approximately 15,000 students per year, which includes about 2,000 international students from over 85 countries. UFV is recognized nationally for student success, an excellent learning environment, creative integration of programming, and its work with local communities. UFV is large enough to offer variety, yet offers small class sizes which allow students to get to know their instructors and learn in a hands-on environment. QS Stars rated UFV 4 Stars overall and a full 5 Stars in internationalization, teaching, inclusion, employability, and online learning.

Located in the beautiful Fraser Valley of British Columbia, Canada, you can find adventure in every direction. In less than an hour's drive you can get to ski hills, the ocean, or the city of Vancouver, or drive five minutes to visit the USA. The weather is temperate so you can enjoy the outdoors all year-round including hiking, swimming, biking, rafting, golfing, fishing, snowboarding, skiing, and more.



Universidad Nacional de Quilmes



Participation in the student exchange program

Current Status with CONAHEC		Deadline for Applications
Hosting International Students	Yes 3	Fall: 31-May Spring: 15-Nov
Sending Students Abroad	Yes 8 students or up to the number of international students hosted.	Varies at each host institution

Who can participate?

Academic programs available for exchange students:

Business Administration (Several Fields), Engineering (Several Areas), Biotechnology, Hospitality and Tourism, Social Sciences, Communication, Education, Nursing.

Restrictions: Maximo 3 alumnos por institucion

Students' requirements: Must be a student in good standing at a CONAHEC member institution.

Information for international students

- **Academics**

Main language of Instruction: Spanish

Full-time academic load per term: Contact institution for more information.

- **Living**

Approximate monthly living costs: Housing: \$2500. Meals: \$3000. Local transportation: \$500.

Additional fees: Private medical insurance is mandatory.

For more information, please check the specific website for international students:
<http://www.unq.edu.ar/secciones/261-programas-de-movilidad-estudiantil/>



Institutional Information



Institution Name: Universidad Nacional de Quilmes

Country: Argentina

Location: Buenos Aires, Argentina. Quilmes is south of the city center.

Website: <http://www.unq.edu.ar>

Description: UNQ is a public university that offers courses at the graduate and undergraduate level. There are currently around 11,000 students enrolled at UNQ.

For more information please visit the university's webpage:
<http://www.unq.edu.ar>

Universidad Nacional del Nordeste



Participation in the student exchange program

Current Status with CONAHEC		Deadline for Applications
Hosting International Students	Yes 5	Fall: 31-May Spring: 15-Oct
Sending Students Abroad	Yes 8 students or up to the number of international students hosted.	Varies at each host institution

Who can participate?

Academic programs available for exchange students:

Accounting, Administration, AgroIndustrial Engineering, Architecture, Arts, Biology, Biochemistry, Business Administration, Chemistry, Civil Engineering, Communication, Criminology, Dentistry, Economics, Education, Electrical Engineering, Electronics Engineering, Environmental Sciences, Geography, Graphic Design, History, Humanities, Information Sciences, Information Systems, International Commerce, Kinesiology, Labor Studies, Law, Mathematics, Mechanical Engineering, Nursing, Philosophy, Physics, Tourism Businesses Management, Veterinary Medicine. **Restrictions:** None
Students' requirements: <http://www.unne.edu.ar>. For more information on student visas, please check: <https://www.cancilleria.gob.ar/en/services/visas/student-visa-365-days>

Information for international students

• Academics

Main language of Instruction: Spanish. **Are there any classes available in English?** No

Full-time academic load per term: Please contact institution for more information.

• Living

Approximate monthly living costs: Check with the university closer to the beginning of the semester for the most updated costs adjusted after inflation.



Institutional Information



Institution Name: Universidad Nacional del Nordeste

Country: Argentina

Location: Corrientes

Website: <http://www.unne.edu.ar>

Description: The National University of the Northeast (Castilian: Universidad Nacional del Nordeste, UNNE) is an Argentine national university. It is located in the cities of Corrientes and Resistencia, capitals cities of the Provinces of Corrientes and Chaco respectively, and was established on December 4, 1956. Known as the university of the sun, it is the seventh-largest university in Argentina by student enrollment numbers.

For more information please visit the university's webpage:
<http://www.unne.edu.ar>

Universidad Católica Boliviana "San Pablo"



Participation in the student exchange program

Current Status with CONAHEC		Deadline for Applications
Hosting International Students	Yes 30	Fall: 31-May Spring: 31-Oct
Sending Students Abroad	Yes 8 students or up to the number of international students hosted.	Varies at each host institution

Who can participate?

Academic programs available for exchange students:

Agribusiness Engineering, Environmental Engineering, Biomedical Engineering, Civil Engineering, Industrial Engineering, Chemical Engineering, Mechatronics Engineering, Systems Engineering, Telecommunications Engineering, Biochemical and Bioprocess Engineering, Energy Engineering, Business Innovation Engineering, The Internet of Thing - Engineering, Electronic Systems Engineering, Biotechnology Engineering, International Relations, and Political Sciences, Law, Medicine, Nursing, Odontology, Physiotherapy and Kinesiology, Architecture, Graphic Design and Visual Communication, Digital Design, Communication Studies, Psychology, Psychopedagogy, Anthropology, Philosophy and Letters, Religious, Sciences, Education, Social pedagogy, Business Administration, Tourist Administration, Public Accounting, Economy, Commercial Engineering, Business Intelligence and Economics, Marketing and Digital Media, Business Engineering, International Business Creation and Enterprise Development, Financial Engineering, Business and Information Technology, Engineering, Business and Design, Business and Data Science Engineering. **Restrictions:** None. **Students' requirements:** Must be a student in good standing at a CONAHEC member institution. Students need to submit an application form, copy of passport, gardes certificate and buddy program form.

Information for international students

Academics

Main language of Instruction: Spanish. Some classes available in English at the Business School

Living

Approximate monthly living costs: Housing: \$250 in a shared apartment or 350-380 for a homestay. Meals: \$200. Local transportation: \$50. **Additional fees:** Check with the university.



Institutional Information



Institution Name: Universidad Católica Boliviana "San Pablo"

Country: Bolivia

Location: La Paz, Bolivia

Website: <http://www.ucb.edu.bo>

International Office:
<https://internacional.ucb.edu.bo/>

Contact: pzapata@ucb.edu.bo

Description: Universidad Católica Boliviana "San Pablo" is the official name of the Catholic University of Bolivia. It is the oldest public university in Bolivia that doesn't receive economical budget of Government. Established in La Paz in 1963 and active from 1966, the university now has four regional units: La Paz, Cochabamba, Tarija and Santa Cruz de la Sierra. Its fundamental mission is the constant search for truth through research, conservation and communication of knowledge for the good of society. Through teaching and research, the Bolivian Catholic University "San Pablo" gives an indispensable contribution to the Church.

It has around 14,000 undergraduate students and 4,000 postgraduate students. The University is made up of 6 faculties, offering together 31 undergraduate and 47 undergraduate programs.

Universidad del Valle



Participation in the student exchange program

Current Status with CONAHEC		Deadline for Applications
Hosting International Students	Yes 5	Fall: 31-May Spring: 30-Nov
Sending Students Abroad	Yes 8 students or up to the number of international students hosted.	Varies at each host institution

Who can participate?

Academic programs available for exchange students:

Business Administration (Several Fields), Engineering (Several Areas), Hospitality and Tourism, Computer Science, Law, Communication, Interior Design, Biochemistry, Kinesiology, Aeronautics, Food Processing Engineering, Culinary Arts

Restrictions: None

Students' requirements: Must be a student in good standing at a CONAHEC member institution.

Information for international students

Academics

Main language of Instruction: Spanish

Full-time academic load per term: Contact Univalle for more information

Living

Approximate monthly living costs: Housing: \$200. Meals: \$200. Local transportation: \$100.

Additional fees: None

For more information, please check the specific website for international students:



Institutional Information



Institution Name: Universidad del Valle

Country: Bolivia

Location: Cochabamba, Bolivia

Website: <http://www.univalle.edu>

Description: Univalle is a private university that focuses on business, engineering, technology and medicine.

For more information on Universidad del Valle please visit the university's webpage <http://www.univalle.edu> or contact Marco Velez Ocampo at mvelezo@univalle.edu

Universidade Estadual Paulista



Participation in the student exchange program

Current Status with CONAHEC		Deadline for Applications
Hosting International Students	Yes 10	Fall: 15-May Spring: 1-Nov
Sending Students Abroad	Yes 8 students or up to the number of international students hosted.	Varies at each host institution

Who can participate?

Academic programs available for exchange students:

Administration, Agricultural Technology - Mechanization, Agronomy, Animal Science, Architecture and Urbanism, Archival sciences, Arts - Drama/ Fine Arts/ Music, Biological Sciences, Biomedical Sciences, Biotechnology, Chemistry, Computer Sciences, Data Processing Technology, Dentistry, Design, Ecology, Economy, Education, Engineering (Several fields) Geography, Geology, History, International Relations, Languages, Law, Library Sciences, Mathematics, Medicine, Meteorology, Music - Keyboards/ Composition or Regency/ Guitar/ Percussion/ Singing/ Strings/ Winds, Nursing, Nutrition, Occupational therapy, Pharmacy-Biochemistry, Philosophy, Physical Education, Physics, Psychology, Public Administration, Public Relations, Social Communications: Design/ Journalism/ Radio, Social Sciences, Social Services, Speech Therapy, Statistics, Technology in Electrical Systems - Electronics, Tourism, Veterinary Medicine, Visual Arts. **Restrictions:** The acceptance depends on coordinator program approval. **Students' requirements:** Must be a student in good standing at a CONAHEC member institution. Students should know at least basic Portuguese to be able to follow classes.

Information for international students

• Academics

Main language of Instruction: Undergraduate courses - Portuguese; Graduate courses - Portuguese, English, Spanish, among others. **Full-time academic load per term:** Two to four courses per semester.

• Living

Approximate monthly living costs: São Paulo city - R\$3,000/ US\$550. Country side cities - R\$2,000/ US\$400. **Additional fees:** None **For more information**, please check: <https://www.international.unesp.br/> and [Fact Sheet here](#).



Institutional Information



Institution Name: Universidade Estadual Paulista

Country: Brazil

Location: São Paulo State, Brazil. 24 different cities: Araçatuba, Araraquara, Assis, Bauru, Botucatu, Dracena, Franca, Guaratinguetá, Ilha Solteira, Itapeva, Jaboatão, Marília, Ourinhos, Presidente Prudente, Registro, Rio Claro, Rosana, São José da Boa Vista, São José dos Campos, São José do Rio Preto, São Paulo, São Vicente, Sorocaba and Tupã.

Website: <http://www.unesp.br>
<http://www.unesp.br/international/>

Description: UNESP is the best case of a multicampus university in Brazil. Its geographical distribution includes 24 campuses located mostly in inland small or medium-sized cities - and one campus in the capital, São Paulo. In total, we have 34 faculties in 24 campuses. As one of three public universities maintained by the government of the state of São Paulo, Unesp offers quality education while developing strategic research and interacting with the society through the provision of services for the community.

Each year, Unesp welcomes international students into our undergraduate programs providing a rich academic, research and social experience on our campuses. In order to promote cultural diversity in the classroom, our institution offers several possibilities for international students such as taking courses, lab internships, practical internships, research groups, language courses, cultural activities, among other initiatives. Unesp offers the second largest structure for graduate studies in Brazil with 152 graduate programs. Our programs are characterized by the diversity of courses offered in all areas of knowledge, academic relevance and comprehensiveness.

Universidade Federal do Paraná



Participation in the student exchange program

Current Status with CONAHEC		Deadline for Applications
Hosting International Students	Yes 20	Fall: 30-May Spring: 30-Oct
Sending Students Abroad	Yes 8 students or up to the number of international students hosted.	Varies at each host institution

Who can participate?

Academic programs available for exchange students:

Education, Agriculture, Forestry, Business Administration (Several Fields), Fine Arts (Several Fields), Engineering (Several Areas), Computer Science, Architecture, Biology, Geography, Geology, Mathematics, Chemistry, Nursing, Anthropology, Sociology, Political Science, History, Philosophy, Psychology, Modern Languages. **Restrictions:** None. **Students' requirements:** Please note that UFPR provides portuguese language assistance at the university's language center. For eligibility information please visit: <http://www.internacional.ufpr.br>

Information for international students

• Academics

Main language of Instruction: Portuguese. **Are there any classes available in English?**

Yes. Some courses available: <http://internacional.ufpr.br/portal/courses-in-english/>

Full-time academic load per term: Contact institution for more information

• Living

Approximate monthly living costs: Curitiba city: Estimated US\$700. Country side cities: Estimated US\$500. **Additional fees:** None

For more information, please check the specific website for international students:

<http://internacional.ufpr.br/portal/about-ufpr/>



Institutional Information



Institution Name: Universidade Federal do Paraná

Country: Brazil

Location: Main campus located in Curitiba. Other campuses located across the state of Parana (one at the coast).

Website: <http://www.ufpr.br>

Description: Universidade Federal do Paraná was founded in 1912. It offers 124 undergraduate degree courses, 44 doctorate, 66 masters and 5 professional masters programs.

UFPR ranks among the 651-700 best universities in the world and 37th best in Latin-America, according to QS World University Rankings. It is placed as the 9th best in the country in the latest "Ranking Universitário Folha (RUF)", published by the nation's largest newspaper.

For more information, please visit the university's webpage: <http://www.ufpr.br/>

Universidad de Santiago de Chile

Participation in the student exchange program

Current Status with CONAHEC		Deadline for Applications
Hosting International Students	Yes 40	Fall: 30-May Spring: 30-Oct
Sending Students Abroad	Yes 8 students or up to the number of international students hosted.	Varies at each host institution

Who can participate?

Academic programs available for exchange students:

Engineering (Several Areas), Public Administration, Computer Science, Biology, Architecture, Business Administration (Several Fields), Philosophy, Mathematics, History, Languages, Journalism, International Studies. Please review the entire catalogue here:

<https://www.admision.usach.cl/carreras/listado> **Restrictions:** Law, Occupational Therapy and Kinesiology **Students' requirements:** 1. Must speak Spanish at an intermediate level or higher 2. Must have a student visa 3. Must have health insurance (contact university for information)

Information for international students

Academics

Main language of Instruction: Spanish. **Are there classes available in English?** No.

Full-time academic load per term: Contact university for information on credits

Living

Approximate monthly living costs: Housing: \$300. Meals: \$300. Local transportation: \$90. Others: Various \$250 **Additional fees:** N/A

For more information, please check the specific website for international students: <http://www.drii.usach.cl/content/preguntas-frecuentes-estudiantes-extranjeros>



Institutional Information



Institution Name: Universidad de Santiago de Chile

Country: Chile

Location: Santiago, Chile

Website: <http://www.usach.cl>

Description: U. de Santiago de Chile is a public and complex university that offers a broad range of academic studies in the areas of Engineering, Physics, Chemistry, Biology, Humanities, Medical Sciences, Architecture and Technology.

One of the axes of this 169 year old University –accredited in all its areas – is research.

For more information on Universidad de Santiago de Chile please visit the university's webpage: <http://www.usach.cl>

Universidad Mayor



Participation in the student exchange program

Current Status with CONAHEC		Deadline for Applications
Hosting International Students	Yes 6 (3 Campus Santiago, 3 Campus Temuco City)	Fall: 7-Apr Spring: 15-Oct
Sending Students Abroad	Yes 8 students or up to the number of international students hosted.	Varies at each host institution

Who can participate?

Academic programs available for exchange students:

School of Sciences: Agronomy, Biotechnology, Civil Construction, Nursing, Speech and Language Therapy, Geology, Forest Engineering, Environmental and Sustainability Engineering, Civil Engineering, Civil Electronic Engineering, Industrial Engineering, Physical Therapy, Medicine, Veterinary, Nutrition, Obstetrics, Dentistry, Psychology, Medical Technology, Occupational Therapy. **School of Humanities:** Architecture, Law, Business, Management, Pedagogy (Several programs), Journalism. **School of Arts:** Digital Animation, Cinema, Design, Theater and several music programs at the conservatory. **Restrictions:** Medicine and Nursing must ask for availability. **Students' requirements:** Must be a student in good standing at a CONAHEC member institution. Application form and fact sheets can be downloaded here: <https://rrii.umayor.cl/incoming-students>.

Information for international students

- **Academics**

Main language of Instruction: Spanish

Full-time academic load per term: Contact institution for information on credits

- **Living**

Approximate monthly living costs: Housing: \$300. Meals: \$300. Local transportation: \$90. Others: Various \$250

Additional fees: Students must acquire an International Health Insurance in their home country, before arriving to Chile.

For more information, please check the specific website for international students:

<https://rrii.umayor.cl/>



Institutional Information



Institution Name: Universidad Mayor

Country: Chile

Location: Santiago, Chile

Website: <http://www.umayor.cl>

Description: Universidad Mayor is a private institution with 45 undergraduate academic programs and 100 post-graduate programs.

For more information on Universidad Mayor please visit the university's webpage: <http://www.umayor.cl>

Universidad San Sebastián

Participation in the student exchange program

Current Status with CONAHEC		Deadline for Applications
Hosting International Students	Yes 10	Fall: 1-May Spring: 31-Oct
Sending Students Abroad	Yes 8 students or up to the number of international students hosted.	Varies at each host institution

Who can participate?

Academic programs available for exchange students:

Nutrition, Architecture, Law, Health Sciences (Several fields), Psychology, Civil Engineering, Nursing, Education, Social Work, Pedagogy, Political Science and Public Administration, Odontology, Pharmaceutical Chemistry, Veterinary Medicine, Biochemistry, Business Economics. **Restrictions:** None

Students' requirements: Must be a student in good standing at a CONAHEC member institution

Information for international students

- **Academics**

Main language of Instruction: Spanish

Full-time academic load per term: Contact university for more information

- **Living**

Approximate monthly living costs: N/A

Additional fees: N/A

For more information, please check the specific website for international students:

<http://www.uss.cl/alumnos/programa-de-intercambio/>



Institutional Information



Institution Name: Universidad San Sebastián

Country: Chile

Location: USS is headquartered in Concepcion and also has campuses in Santiago, Valdivia, Puerto Montt, and Osorno.

Website: <http://www.uss.cl>

Description: Universidad San Sebastián (USS, St. Sebastian University) is a private autonomous Chilean university with its headquarters situated in Santiago de Chile. It is also located in Concepción (its previous headquarters), Valdivia, Osorno and Puerto Montt.

It was founded in 1989, and later on 2001, USS gets a formal state recognition as University. By 2011, it counted with 21.572 students.

For more information on Universidad San Sebastián please visit the university's webpage: <http://www.uss.cl>

Fundación Universitaria Navarra – UNINAVARRA

Participation in the student exchange program

Current Status with CONAHEC		Deadline for Applications
Hosting International Students	Yes 8	Fall: 15-May Spring: 31-Oct
Sending Students Abroad	Yes 8 students or up to the number of international students hosted.	Varies at each host institution



Institutional Information



Institution Name: Fundación Universitaria Navarra – UNINAVARRA

Country: Colombia

Location: Neiva, Huila, Colombia

Website: <http://www.uninavarra.edu.co>

Description: UNINAVARRA is a private Higher Education Institution with a business and social vision. Our academic programs are offered in facilities with optimal conditions, simulation environments and laboratories in accordance with the highest academic requirements and standards. Thanks to its positive impact in the southern region of Colombia, UNINAVARRA has consolidated its academic programs especially in the School of Health Sciences due to it being the only private Higher Education Institution having its own practice centers in clinics located in different cities of the country.

Who can participate?

Academic programs available for exchange students:

Medicine, Nursing, Radiology and Diagnostic Imaging, Law, Constitutional Law and Inter-American Rights System, Medical Law, Industrial Engineering, Environmental Engineering, Business Administration, Health Services Management. **Restrictions:** None. **Students' requirements:** Enrollment in good standing at a CONAHEC member institution. Spanish certificate is not mandatory but proficiency level B1 is highly recommended.

Information for international students

- Academics**

Main language of Instruction: Spanish. **Are there any classes available in English?** No

Full-time academic load per term: Contact institution for information on credits

- Living**

Approximate monthly living costs: Housing: \$300. Meals: \$200. Local transportation: \$60. Others: Various \$100. We offer a single room in off-campus accommodation for one exchange student on a reciprocity basis. Contact us for more information.

Additional fees: Health Insurance. Uniform for Health Sciences students.



Pontificia Universidad Javeriana

Participation in the student exchange program

Current Status with CONAHEC		Deadline for Applications
Hosting International Students	Yes 10	Fall: 14-Apr Spring: 14-Oct
Sending Students Abroad	Yes 8 students or up to the number of international students hosted.	Varies at each host institution

Who can participate?

Academic programs available for exchange students:

Anthropology, Architecture, Visual Arts, Biology, Political Science, Religion, Communication, Business Administration (Several Fields), Law, Industrial Design, Ecology, Nursing, Literature, Music, Philosophy, History, Engineering (Several Areas), Modern Languages, Education, Mathematics, Nutrition, Psychology, Sociology, among others. **Restrictions:** Medicine. In addition, the number of quota will depend on approval from each program and/or faculty and the acceptance will be subject to previous study of profile of the student. **Students' requirements:** Enrollment in good standing at a CONAHEC member institution and junior or senior standing.

Information for international students

Academics

Main language of Instruction: Spanish. **Are there any classes available in English?** Yes. Some courses available in English

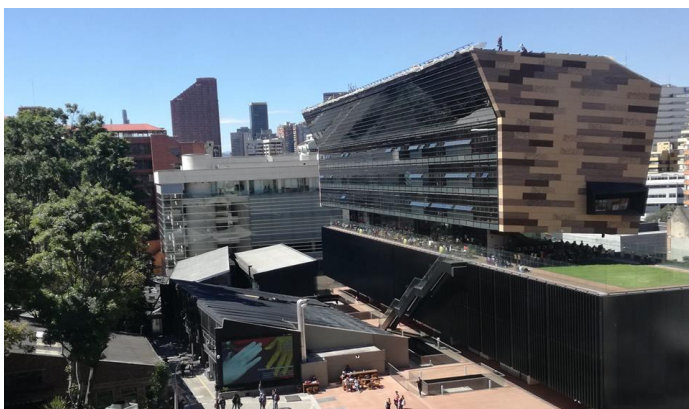
Full-time academic load per term: 17-20 academic credits

Living

Approximate monthly living costs: 300-600 USD **No Additional fees.**

For more information, please check the specific website for international students:

<https://www.javeriana.edu.co/internacionalizacion/intercambioestudiantilentrante>



Institutional Information



Institution Name: Pontificia Universidad Javeriana

Country: Colombia

Location: Bogota, Colombia

Website: <http://www.javeriana.edu.co>

Description: A jesuit university founded in 1623, Javeriana offers over 150 academic programs at the undergraduate and graduate level.

For more information Pontificia Universidad Javeriana please visit the university's webpage: <http://www.javeriana.edu.co>

Universidad del Norte

Participation in the student exchange program

Current Status with CONAHEC		Deadline for Applications
Hosting International Students	Yes 10	Fall: 15-Apr Spring: 15-Oct
Sending Students Abroad	Yes 8 students or up to the number of international students hosted.	Varies at each host institution

Who can participate?

Academic programs available for exchange students:

Business Administration, International Business, Accounting, Data Science, Political Science, Mass Communication and Journalism, Law, Graphic Design, Industrial Design, Economics, Nursing, Engineering (Civil, Electrical, Electronics, Industrial, Mechanical, Systems and Computer Engineering), Mathematics, Music, Psychology, International Relations, Architecture, Geology, Early Childhood Education, Medicine, Dentistry, Languages and Modern Culture. **Restrictions:** None. Students' requirements: Must be a student in good standing at a CONAHEC member institution. 1. The home university nominates the student 2. Once the nomination is accepted, the student must complete his/her application through the mobility platform.

Information for international students

- **Academics**

Main language of Instruction: Spanish. Some courses are taught in English. Please contact university for more information on classes taught in English.

Full-time academic load per term: Contact institution for details.

- **Living**

Approximate monthly living costs: 600-800 usd. For more information, please check the specific website for international students:

<https://www.uninorte.edu.co/web/intercambios-internacionales/estudiantesinternacionales>



Institutional Information



Institution Name: Universidad del Norte

Country: Colombia

Location: Baranquilla, Colombia

Website: <http://www.uninorte.edu.co>

Description: Universidad del Norte (UNINORTE) is a private non-profit fully accredited university with an enrollment of approximately 16,000 students, recognized as one of the top universities in Colombia.

For more information on Universidad del Norte please visit the university's webpage: <http://www.uninorte.edu.co>

Universidad Simón Bolívar

Participation in the student exchange program

	Current Status with CONAHEC	Deadline for Applications
Hosting International Students	Yes 30	Fall: 31-May Spring: 13Nov
Sending Students Abroad	Yes 8 students or up to the number of international students hosted.	Varies at each host institution

Who can participate?

Academic programs available for exchange students:

Business Administration, Commerce and International Business, Accounting, Medicine, Nursing, Physiotherapy, Surgical Instrumentation, Microbiology, Law, Psychology, Social Work, Industrial Engineering, Mechanical Engineering, Systems Engineering and Multimedia Engineering, Mechatronics engineering, and Biomedical engineering. **Restrictions:** None. **Students' requirements:** 1- Enrollment in good standing at a CONAHEC member institution. 2- Language Proficiency in Spanish. 3- The home university gets in touch with us to know the application process. 4- The students must complete their application and submitting the documents to their home institution. 5- The home institution nominates its students.

Information for international students

• Academics

Main language of Instruction: Spanish.

Are there any classes available in English? No

Full-time academic load per term: Contact institution for information on credits

• Living

Approximate monthly living costs: 300-600 USD (Housing, local transportation, meals and personals expenses).

Additional fees: International Health Insurance. Uniform for Medicine.



Institution Name: Universidad Simón Bolívar

Country: Colombia

Location: Barranquilla, Colombia. Unisimón also has a campus in Cúcuta, a city located in the northeast of the country.

Website: <https://unisimon.edu.co/>

Description: Universidad Simón Bolívar is a non-profit higher education institution dedicated to comprehensive training, the development of research and innovation, which, articulated with the Government, the productive sector and the community in general, responds to the commitment with the development of the social, political, cultural and economic environment.

It was founded in 1972 and is considered one of the most prestigious universities in Colombia, after the Ministry of National Education awarded it a high-quality accreditation in 2016. It is also considered one of the Universities with the greatest social impact worldwide.

Instituto Tecnológico de Santo Domingo



Participation in the student exchange program

Current Status with CONAHEC		Deadline for Applications
Hosting International Students	Yes N/A	Fall: 4-May Spring: 3-Nov
Sending Students Abroad	Yes 8 students or up to the number of international students hosted.	Varies at each host institution

Who can participate?

Academic programs available for exchange students:

[Business Administration](#), [Engineering](#), [Social Sciences and Humanities](#), [Health Sciences](#), [Basic and Environmental Sciences](#). For more information on academic programs, please visit: <https://www.intec.edu.do/oferta-academica/grado/>

Restrictions: None

Students' requirements: For more information on admission requirements,

<http://www.intec.edu.do/estudiantes/movilidad-estudiantil/admisiones>

Information for international students

- **Academics**

Main language of Instruction: Spanish

Full-time academic load per term: Contact institution for information on credits.

- **Living**

Approximate monthly living costs: N/A

Additional fees: N/A

For more information, please check the specific website for international students:

<https://www.intec.edu.do/admisiones/237-oferta-academica/movilidad-estudiantil-intercambios>



Institutional Information



Institution Name: Instituto Tecnológico de Santo Domingo

Country: Dominican Republic

Location: Santo Domingo, Dominican Republic

Website: <http://www.intec.edu.do>

Description: Instituto Tecnológico de Santo Domingo —or Santo Domingo Institute of Technology (also known as INTEC), is a private, coeducational, university in Santo Domingo, Dominican Republic. It was founded on June 15, 1972, by a group of young professionals and is considered the best institute of technology in the country.

For more information on Instituto Tecnológico de Santo Domingo please visit the university's webpage: <http://www.intec.edu.do>

Universidad Ecotec



Participation in the student exchange program

Current Status with CONAHEC		Deadline for Applications
Hosting International Students	Yes 20	Fall: 18-Jun Spring: 19-feb
Sending Students Abroad	Yes 8 students or up to the number of international students hosted.	Varies at each host institution

Who can participate?

Academic programs available for exchange students:

Communication, Marketing, Psychology, Hospitality and Tourism, Law, International Relations, Information Technologies, Business Administration, Trade, Accounting, Economics, Finance, International Business, Human Resources, Agronomy and Industrial Engineering. **Restrictions:** None.

Students' requirements: Students will have to fill-out ECOTEC application, provide a recommendation, a copy of their passport, transcript and proof of Spanish proficiency. For more information on eligibility visit the university webpage:

<https://ecotec.edu.ec/internacional/> or download the institutional brochures available in [English](#) or [Spanish](#).

Information for international students

• Academics

Main language of Instruction: Spanish. **Are there any classes available in English?** Yes. Some courses available in English. **Full-time academic load per term:** Contact Ecotec for more information.

• Living

Approximate monthly living costs: N/A **Additional fees:** International Health Insurance (\$250 approximately one time payment) / Housing: \$600 (including meals) / Personal expenses \$100 / Local transportation \$25 / ***Free school bus

For more information, please check the specific website for international students:

<http://www.ecotec.edu.ec/internacional/>



Institutional Information



Institution Name: Universidad Ecotec

Country: Ecuador

Location: Guayaquil, Ecuador

Website: <http://www.ecotec.edu.ec/>

Description: Ecotec offers programs in Business and Economics; Marketing, Communications and Psychology; Tourism and Hospitality; Engineering; and, Law and Governance. Ecotec also offers a Spanish language for non-native speakers.

For more information on eligibility visit the university webpage:

<https://ecotec.edu.ec/internacional/> or download the institutional

Universidad Técnica Particular de Loja

Participation in the student exchange program

Current Status with CONAHEC		Deadline for Applications
Hosting International Students	Yes 20	Fall: 30-Apr Spring: 31-Oct
Sending Students Abroad	Yes 8 students or up to the number of international students hosted.	Varies at each host institution



Who can participate?

Academic programs available for exchange students:

Business Administration, Finance, Accounting, Tourism Businesses Management, Economics, Biochemistry, Environmental Sciences, Chemical Engineering, Biology, Medicine, Law, Communications, Psychology, Education, Architecture Arts, Geology, Civil Engineering, Electronics Engineering, Computer/Information.

Restrictions: None *Students' requirements:*

Information for international students

- **Academics**

Main language of Instruction: Spanish. **Are there any classes available in English?** No

- **Living**

Approximate monthly living costs: Housing and food between 350 and 400 US dollars. Free local transportation to and from the University (with stops throughout the city of Loja). **Additional fees:** Medical insurance

For more information, please check the specific website for international students:

www.utpl.edu.ec/internacional



Institutional Information



Institution Name: Universidad Técnica Particular de Loja

Country: Ecuador

Location: Loja, Ecuador

Website: www.utpl.edu.ec

Description: The UTPL is an autonomous institution, with social and public purpose that imparts, develops research with scientific-administrative freedom, and participates in development plans of the country.

With a vision of "think globally and act locally", the UTPL Global Campus program is aimed at strategically incorporating a culture of internationalization into the university community through the management of its strategic dimensions, with the aim of instilling new knowledge, skills and attitudes for a global citizenship that allows them to perform effectively in an international and intercultural environment.

For more information on Universidad Tecnológica Particular de Loja please visit the university's webpage:
<https://www.utpl.edu.ec/>

University of Potsdam



Participation in the student exchange program

Current Status with CONAHEC		Deadline for Applications
Hosting International Students	Yes 5	Fall: 15-June Spring: 15-Dec
Sending Students Abroad	Yes 8 students or up to the number of international students hosted.	Varies at each host institution

Who can participate?

Academic programs available for exchange students:

English Studies/American Studies; Ancient Greek; Biology; Business Administration; Business Informatics; Chemistry; Computational Linguistics; Computational Science; Cultural Studies; Earth Sciences; Economics; European Media Studies; French Philology; Geoecology; Geography; German Studies; History; Italian Philology; IT-Systems Engineering; Jewish Studies; Latin Philology; Law; Life Sciences; Linguistics; Mathematics; Music; Nutrition Sciences; Patholinguistics; Educational Sciences; Philosophy; Physics; Polish Philology; Politics and Economics; Political Science; Politics, Administration and Organization; Psychology; Religious Studies; Eastern European Cultural Studies; Sociology; Spanish Philology; Sports **Restrictions:** Some fee-based continuing education programs. **Students' requirements:** Must be a student in good standing at a CONAHEC member institution.

Information for international students

• Academics

Main language of instruction: All bachelor's courses are taught in German. Therefore applicants should possess good German skills. On the master's level, the University of Potsdam currently offers 20 degree courses in English (see: www.uni-potsdam.de/en/studium/what-to-study/english-language-courses-and-degree-programs). **Full-time academic load:** 30 ECTS per semester

• Living

Approximate monthly living costs: Housing: from \$400 to \$650. Meals: \$190. Local transportation: Included in the semester fee (for the entire region of Berlin-Brandenburg). Medical insurance is mandatory. **Additional fees:** Semester fee at the University of Potsdam: \$270/semester.

For more information, please check the specific website for international students: www.uni-potsdam.de/en/international/incoming/students/exchange



Institutional Information



Institution Name: University of Potsdam

Country: Germany

Location: Am Neuen Palais 10, 14469 Potsdam

Website: www.uni-potsdam.de

Description: Young, modern, and focused on the future: Founded in 1991, the University of Potsdam already occupies a prominent position among the universities of Berlin and Brandenburg. In the 2019 Times Higher Education Young University Ranking it was ranked #4 in Germany and #24 worldwide. More than 20,000 students from 119 countries study

The University offers a broad range of bachelor's and master's programs in the fields of the arts, economics and social sciences, law, human sciences, natural sciences, and digital engineering. We currently also offer 20 master's degree programs in English. Moreover, the University closely cooperates with numerous research institutions of international acclaim located in the Potsdam area.

Potsdam's palaces and parks form one of Germany's biggest UNESCO World Heritage sites. Situated alongside the Havel River, the city is also a perfect place for outdoor activities. The German capital, Berlin, can be reached in just 30 minutes by public transport.

Universidad de Oviedo

Participation in the student exchange program

Current Status with CONAHEC		Deadline for Applications
Hosting International Students	Yes 15	Fall: 15-May Spring: 15-Oct
Sending Students Abroad	Yes 8 students or up to the number of international students hosted.	Varies at each host institution

Who can participate?

Academic programs available for exchange students:

Business Administration (Several Fields), Philosophy, English, Classical Studies, Geography, History, Modern Languages, Art History, Biology, Chemistry (Several Areas), Physics, Geology, Biotechnology, Mathematics, Law, Education, Social Work, Engineering (Several Areas), Public Administration. **Restrictions:** Overall max. two students per institution. Students from health sciences can not apply.

Students' requirements: Must be a student in good standing at a CONAHEC member institution. Contact university for additional requirements.

Information for international students

Academics

Main language of Instruction: Spanish, with some graduate courses taught in English. Contact university for more information. **Are there any classes available in English?** Yes, there are some courses available in English. Please check the offer in the following website: <http://sies.uniovi.es/ofe-pod-jsf/web/ingles/index.faces>

Full-time academic load per term: Contact institution for more information.

Living

Approximate monthly living costs: Please see the webpage <http://www.uniovi.es/en/internacional/extranjeros> for updated information.

Additional fees: N/A

For more information, please check the specific website for international students: <http://www.uniovi.es/en/internacional/extranjeros>



Institutional Information



Universidad de Oviedo

Institution Name: Universidad de Oviedo

Country: Spain

Location: Asturias, Spain, with campuses in Mieres, Gijón, and Oviedo

Website: <http://www.uniovi.es>

Description: The Universidad de Oviedo is a public university with around 30,000 students that offers a wide variety of academic programs.

For more information on Universidad de Oviedo please visit the university's webpage: <http://www.uniovi.es>

Universidad del País Vasco / Euskal Herriko Unibertsitatea

Participation in the student exchange program

Current Status with CONAHEC		Deadline for Applications
Hosting International Students	Yes - 20 (10 students from Latin America and 10 students from other regions)	Fall: 30-Apr Spring: 31-Oct
Sending Students Abroad	Yes 8 students or up to the number of international students hosted.	Varies at each host institution

Who can participate?

Academic programs available for exchange students:

Business Administration (Several Fields), Engineering (Several Areas), Political Science, Philosophy, Anthropology, Sociology, Biology, Environmental Sciences, Communication, History, Mathematics, Geography, Psychology, Physics, Chemistry, Education, Linguistics, Translation and Interpretation, Physical Education, Nutrition, Social Work, Nursing, Law, Computer Science. **Restrictions:** Only undergraduate students will be accepted. Exchange students cannot enroll in Medicine, Odontology, or Physiotherapy courses and/or in any postgraduate studies. **Students' requirements:** Must be a student in good standing at a CONAHEC member institution. Some centres could ask to proof level B1-B2 in the language those courses are taught (Spanish or English).

Information for international students

• Academics

Main language of Instruction: Castillian (Spanish) and Basque (Euskera). **Are there any classes available in other languages?** Yes (Euskera, English, and French), but students should check the availability of these subjects according to their field of study in each faculty or centre's website or at the following link:

<https://www.ehu.eus/en/web/nazioarteko-harremanak/en-courses-taught-in-english-and-french>. Students are also encouraged to take Spanish and Basque language courses (free of charge) <http://www.ehu.eus/en/web/nazioarteko-harremanak/en-available-courses>

• Living

Approximate monthly living costs: Housing: \$370. Meals: \$250. Local transportation: \$50. Others: \$100. **Additional fees:** Private medical insurance is mandatory.

<http://www.ehu.eus/en/web/nazioarteko-harremanak/en-medicalinsurance>

For more information, please check the specific website for international students:

<http://www.ehu.eus/en/web/nazioarteko-harremanak/en-latin-america-others>



Institutional Information



Institution Name: Universidad del País Vasco / Euskal Herriko Unibertsitatea

Country: Spain

Location: Northern Spain in the Basque Autonomous Region. There are three main campuses: Campus of Alava located in Vitoria-Gasteiz, Campus of Bizkaia located in Bilbao and Leioa and Campus of Gipuzkoa located in Donostia-San Sebastián.

Website: <http://www.ehu.eus>

Description: The Universidad del País Vasco/Euskal Herriko Unibertsitatea is a public university that offers a wide variety of academic programs at the graduate and undergraduate level. It is also the only public university in the Basque Region.

For more information on Universidad del País Vasco/Euskal Herriko Unibertsitatea, please visit the university's webpage:

<http://www.ehu.eus/en/web/nazioarteko-harremanak/en-international-relations>

Hankuk University of Foreign Studies

Participation in the student exchange program

	Current Status with CONAHEC	Deadline for Applications
Hosting International Students	Yes 10 <u>maximum ONE student per institution.</u>	Fall: 30-Apr Spring: 30-Oct
Sending Students Abroad	Yes 8 students or up to the number of international students hosted.	Varies at each host institution

Who can participate?

Academic programs available for exchange students:

Global Campus: International Area Studies (several areas) Languages (several languages), Korean Studies, Interpretation and Translation, International Sports and Leisure*, Engineering (several areas), Global Business Technology*, International Finance*, Mathematics*, Statistics*. **Seoul Campus:** – Languages (several languages), Business Administration*, English (several areas) *, International Economics and Law*, International Studies*, Language and Trade* **Both Campus:** Intensive Korean Language Program is offered to exchange students at their expense. **Note:** * 50% or more of the courses are taught in English. **Restrictions:** Law School, Language & Diplomacy, Communicative Languages. **Students' requirements:** Must be a student in good standing at a CONAHEC member institution. **Note:** Students must first apply through the CONAHEC system and then be nominated and apply through the HUFS online system. If you are nominated for the Global Campus, you can only apply to the Global Campus.

Information for international students

• Academics

Main language of Instruction: Korean, English (proof of proficiency required*), or Area Languages *Note: Language proficiency scores are not required for students solely taking intensive Korean language)

• Living

Approximate monthly living costs: Housing: \$250. Meals: \$350. Local transportation: \$20. Others: Books/Materials \$30. Mobile phone and Miscellaneous \$100. **Additional fees:** Student health insurance is mandatory (It can be purchased either at home country or in Korea).

For more information, please check the specific website for international students:

<http://international.hufs.ac.kr/>



Institutional Information



Institution Name: Hankuk University of Foreign Studies

Country: South Korea

Location: Seoul, Republic of Korea. Hankuk also has a campus in Yongin, a city about 25 miles south of Seoul

Website: <http://www.hufs.ac.kr>

Description: Hankuk was originally founded as a foreign language institute. It now offers a wide variety of academic programs at the undergraduate and graduate level.

For more information on Hankuk University of Foreign Studies please visit the university's webpage: <http://www.hufs.ac.kr>

Hanyang University ERICA Campus

Participation in the student exchange program

Current Status with CONAHEC		Deadline for Applications
Hosting International Students	Yes 10	Fall: 15-Apr Spring: 15-Oct
Sending Students Abroad	Yes 8 students or up to the number of international students hosted.	Varies at each host institution

Who can participate?

Academic programs available for exchange students:

Engineering (Several Fields), Computing, Communication (Several Fields), Languages & Culture (Several Fields), Business & Economics (Several Fields), Sports & Arts (Several Fields).

Restrictions: 1) College of Pharmacy, Applied Music, Dance and Performing Arts, Accounting and Tax, Actuarial Science, Smart ICT Convergence, 2) Students can only apply to ERICA campus.

Students' requirements: 1) Must have applied through CONAHEC system. 2) Minimum GPA 60%. 3) Language Proficiency in Korean (TOPIK Level 3) or English (CEFR B2, IELTS 5.5, TOEIC 785, IBT 72, ITP 543, Duolingo 90). *Exception: Korean Citizenship holders or Students from universities in English-speaking Countries (US, Canada - except Quebec), UK, Australia, Iceland, and New Zealand)

Information for international students

Applications will be reviewed from early October for Spring semester, and early April for Fall semester" in the Information for International students. For more information, please refer to our website for exchange students:

<http://ericaexchange.hanyang.ac.kr/>

- **Academics**

Main language of Instruction: Korean and English. <https://bit.ly/3v37whZ>

Full-time academic load per term: Contact Hanyang

- **Living**

Approximate monthly living costs: 600,000 KRW (excluding accommodation)



Institutional Information



Institution Name: Hanyang University – ERICA Campus

Country: Korea

Location: Ansan, Gyeonggi-do

Website:

<http://www.hanyang.ac.kr/english>

Description: Hanyang University is a private research university in South Korea. The main campus is in Seoul, and the second one, the Education Research Industry Cluster at Ansan, or ERICA campus, is located in Ansan. Hanyang (한양;漢陽) derives from the former name of the capital Seoul which was used during the Chosun Dynasty. Its motto and educational philosophy is Love in Deed and Truth.

For more information Hanyang University please visit the university's webpage:

<http://www.hanyang.ac.kr/english>